



JONAH VENTURES

KNOWLEDGE IN SEQUENCE

<https://jonahventures.com/>

Founded in 2014

Process >20k samples a year

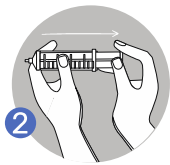
>350 clients

High-throughput amplicon sequencing, qPCR

Sampling



ACTIVATE ACCOUNT



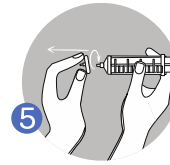
DRAW WATER



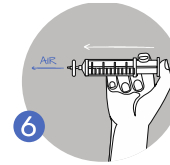
ATTACH FILTER



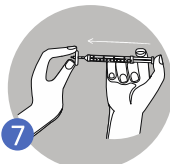
PUSH WATER



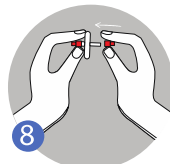
REPEAT UNTIL FILTER CLOGGED



PUSH AIR



INJECT PRESERVATIVE



PUT ON LOCK CAPS



PLACE FILTER IN CUP



ENTER DATA INTO APP



MAIL CUP

Sampling and Sample Processing



- Typically, more samples > fewer, larger volume samples
- Integrate metadata collection into sample tracking from the start
- TE buffer as a DNA preservative
- Run negative controls at all steps in the process (and sequence the controls!)
- Be careful to minimize well-to-well contamination during PCR
- Currently developing protocol for DNA extraction directly from sealed filters

